

**Presse-étoupe laiton nickelé
filetage métrique court**

Progress MS

Matière : Laiton nickelé
Joint intérieur : TPE
Joint torique : NBR

Rés. à la traction : selon EN 50262
version A

**Kabelverschraubungen Messing
Gewinde metrisch kurz**

Progress MS

Material: Messing vernickelt
Dichtung: TPE
O-Ring: NBR

Zugfestigkeit: Nach EN 50262
Ausführung A

**Cable glands nickel-plated brass
short metric thread**

Progress MS

Material: nickel-plated brass
Seal: TPE
O-ring: NBR

Strain relief: acc.to EN 50262
Version A

IP 68



+100°C
-40°C



Référence
article



Ø
mm

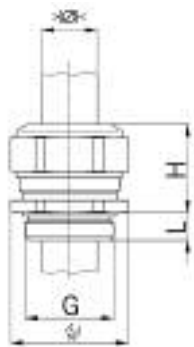


H
mm

L
mm

Joint long en une partie

Filetage de raccordement métrique court
(isolation traversante)



Langer, einteiliger Dichtungseinsatz

Kurzes Anschlussgewinde metrisch
(durchgehend isoliert)

Long, one-piece sealing insert

Short entry thread metric
(overall length insulated)

Reference	Thread	Length (mm)	Strain relief (mm)	H (mm)	L (mm)
A1060.06.025	M 6x1	2,0 - 2,5	8	12	5
A1060.06.030	M 6x1	2,5 - 3,0	8	12	5
A1060.08.030	M 8x1,25	2,5 - 3,0	11	14	5
A1060.08.040	M 8x1,25	3,0 - 4,0	11	14	5
A1060.10.040	M10x1,5	3,0 - 4,0	13	15	5
A1060.10.060	M10x1,5	4,0 - 6,0	13	15	5
A1060.12.050	M12x1,5	3,5 - 5,0	15	17	5
A1060.12.065	M12x1,5	5,0 - 6,5	15	17	5
A1060.12.075	M12x1,5	6,5 - 7,5	15	17	5
A1060.17.060	M16x1,5	4,5 - 6,0	18	20	5
A1060.17.080	M16x1,5	6,0 - 8,0	18	20	5
A1060.17.105	M16x1,5	8,0 - 10,5	18	22	5
A1060.20.080	M20x1,5	6,0 - 8,0	24	21	6
A1060.20.110	M20x1,5	8,0 - 11,0	24	21	6
A1060.20.145	M20x1,5	11,0 - 14,5	24	23	6
A1060.25.125	M25x1,5	9,5 - 12,5	30	25	7
A1060.25.160	M25x1,5	12,5 - 16,0	30	25	7
A1060.25.190	M25x1,5	16,0 - 19,0	30	28	7
A1060.32.210	M32x1,5	17,0 - 21,0	36	28	8
A1060.32.255	M32x1,5	21,0 - 25,5	36	28	8
A1060.40.285	M40x1,5	24,0 - 28,5	46	31	8
A1060.40.330	M40x1,5	28,5 - 33,0	46	31	8
A1060.50.370	M50x1,5	33,0 - 37,0	55	34	9
A1060.50.420	M50x1,5	37,0 - 42,0	55	34	9
A1060.63.460	M63x1,5	40,0 - 46,0	70	37	10
A1060.63.520	M63x1,5	46,0 - 52,0	70	37	10
A1060.75.560	M75x1,5	50,0 - 56,0	80	38	11
A1060.75.630	M75x1,5	56,0 - 63,0	80	38	11

Joint long en deux parties

Filetage de raccordement métrique court
(isolation traversante)

Langer, zweiteiliger Dichtungseinsatz

Kurzes Anschlussgewinde metrisch
(durchgehend isoliert)

Long, two-piece sealing insert

Short entry thread metric
(overall length insulated)

Reference	Thread	Length (mm)	Strain relief (mm)	H (mm)	L (mm)
A1060.17	M16x1,5	6,0 - 10,5	18	22	5
A1060.20	M20x1,5	8,0 - 14,5	24	23	6
A1060.25	M25x1,5	12,5 - 19,0	30	28	7
A1060.32	M32x1,5	17,0 - 25,5	36	28	8
A1060.40	M40x1,5	24,0 - 33,0	46	31	8
A1060.50	M50x1,5	33,0 - 42,0	55	34	9
A1060.63	M63x1,5	40,0 - 52,0	70	37	10
A1060.75	M75x1,5	50,0 - 63,0	80	38	11



**Presse-étoupe laiton nickelé
filetage métrique court**



Matière : Laiton nickelé
Joint intérieur : TPE
Joint torique : NBR

Rés. à la traction : selon EN 50262
version A

**Kabelverschraubungen Messing
Gewinde metrisch kurz**



Material: Messing vernickelt
Dichtung: TPE
O-Ring: NBR

Zugfestigkeit: Nach EN 50262
Ausführung A

**Cable glands nickel-plated brass
short metric thread**



Material: nickel-plated brass
Seal: TPE
O-ring: NBR

Strain relief: acc.to EN 50262
Version A

IP 68

+100°C
-40°C



Référence
article



G

Ø
mm



mm

H
mm

L
mm

Joint court en une partie

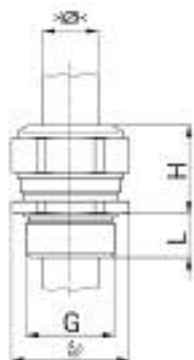
Filetage de raccordement métrique court
(isolation non traversante)

Kurzer, einteiliger Dichtungseinsatz

Kurzes Anschlussgewinde metrisch
(nicht durchgehend isoliert)

Short, one-piece sealing insert

Short entry thread metric
(not overall length insulated)



A1000.06.025	M 6x1	2,0 - 2,5	8	12	5
A1000.06.030	M 6x1	2,5 - 3,0	8	12	5
A1000.06.035	M 6x1	3,0 - 3,5	8	12	5
A1000.08.035	M 8x1,25	2,5 - 3,5	11	14	5
A1000.08.050	M 8x1,25	3,5 - 5,0	11	14	5
A1000.10.040	M10x1,5	3,0 - 4,0	13	15	5
A1000.10.060	M10x1,5	4,0 - 6,0	13	15	5
A1000.12.050	M12x1,5	3,5 - 5,0	15	17	5
A1000.12.065	M12x1,5	5,0 - 6,5	15	17	5
A1000.12.080	M12x1,5	6,5 - 8,0	15	17	5
A1000.17.045	M16x1,5	3,5 - 4,5	18	20	5
A1000.17.060	M16x1,5	4,5 - 6,0	18	20	5
A1000.17.080	M16x1,5	6,0 - 8,0	18	20	5
A1000.17.105	M16x1,5	8,0 - 10,5	18	22	5
A1000.20.080	M20x1,5	6,0 - 8,0	24	21	6
A1000.20.110	M20x1,5	8,0 - 11,0	24	21	6
A1000.20.150	M20x1,5	11,0 - 15,0	24	23	6
A1000.25.125	M25x1,5	9,5 - 12,5	30	25	7
A1000.25.160	M25x1,5	12,5 - 16,0	30	25	7
A1000.25.205	M25x1,5	16,0 - 20,5	30	28	7
A1000.32.170	M32x1,5	14,0 - 17,0	36	28	8
A1000.32.210	M32x1,5	17,0 - 21,0	36	28	8
A1000.32.255	M32x1,5	21,0 - 25,5	36	28	8
A1000.40.240	M40x1,5	20,0 - 24,0	46	31	8
A1000.40.285	M40x1,5	24,0 - 28,5	46	31	8
A1000.40.330	M40x1,5	28,5 - 33,0	46	31	8
A1000.50.330	M50x1,5	29,0 - 33,0	55	34	9
A1000.50.370	M50x1,5	33,0 - 37,0	55	34	9
A1000.50.420	M50x1,5	37,0 - 42,0	55	34	9
A1000.63.400	M63x1,5	35,0 - 40,0	70	37	10
A1000.63.460	M63x1,5	40,0 - 46,0	70	37	10
A1000.63.520	M63x1,5	46,0 - 52,0	70	37	10
A1000.75.500	M75x1,5	45,0 - 50,0	80	38	11
A1000.75.560	M75x1,5	50,0 - 56,0	80	38	11
A1000.75.630	M75x1,5	56,0 - 63,0	80	38	11
A1000.85.700	M85x2,0	63,0 - 70,0	95	41	18
A1000.95.750	M95x2,0	68,0 - 75,0	110	51	20
A1000.95.800	M95x2,0	73,0 - 80,0	110	51	20
A1000.100.850	M100x3,0	78,0 - 85,0	115	51	22
A1000.105.900	M105x3,0	83,0 - 90,0	120	52	22
A1000.115.950	M115x3,0	88,0 - 95,0	125	52	22

Joint court en une partie

Filetage de raccordement métrique court
(isolation non traversante)

Kurzer, einteiliger Dichtungseinsatz

Kurzes Anschlussgewinde metrisch
(nicht durchgehend isoliert)

Short, one-piece sealing insert

Short entry thread metric
(not overall length insulated)

A1000.17	M16x1,5	6,0 - 10,5	18	22	5
A1000.20	M20x1,5	8,0 - 15,0	24	23	6
A1000.25	M25x1,5	12,5 - 20,5	30	28	7
A1000.32	M32x1,5	17,0 - 25,5	30	28	8
A1000.40	M40x1,5	24,0 - 33,0	46	31	8
A1000.50	M50x1,5	33,0 - 42,0	55	34	9
A1000.63	M63x1,5	40,0 - 52,0	70	37	10
A1000.75	M75x1,5	50,0 - 63,0	80	38	11



**Presse-étoupe laiton nickelé
filetage métrique long**

Progress MS

Matière : Laiton nickelé
Joint intérieur : TPE
Joint torique : NBR

Rés. à la traction : selon EN 50262
version A

**Kabelverschraubungen Messing
Gewinde metrisch lang**

Progress MS

Material: Messing vernickelt
Dichtung: TPE
O-Ring: NBR

Zugfestigkeit: Nach EN 50262
Ausführung A

**Cable glands nickel-plated brass
long metric thread**

Progress MS

Material: nickel-plated brass
Seal: TPE
O-ring: NBR

Strain relief: acc. to EN 50262
Version A

IP 68



+100°C
-40°C



Référence
article



Ø
mm

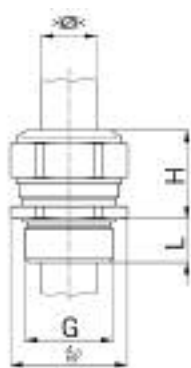


H
mm

L
mm

Joint long en une partie

Filetage de raccordement métrique long
(isolation traversante)



Langer, einteiliger Dichtungseinsatz

Langes Anschlussgewinde metrisch
(durchgehend isoliert)

Long, one-piece sealing insert

Long entry thread metric
(overall length insulated)

A1160.06.025	M 6x1	2,0 - 2,5	8	12	8
A1160.06.030	M 6x1	2,5 - 3,0	8	12	8
A1160.08.030	M 8x1,25	2,5 - 3,0	11	14	10
A1160.08.040	M 8x1,25	3,0 - 4,0	11	14	10
A1160.10.040	M10x1,5	3,0 - 4,0	13	15	10
A1160.10.060	M10x1,5	4,0 - 6,0	13	15	10
A1160.12.050	M12x1,5	3,5 - 5,0	15	17	10
A1160.12.065	M12x1,5	5,0 - 6,5	15	17	10
A1160.12.075	M12x1,5	6,5 - 7,5	15	17	10
A1160.17.105	M16x1,5	8,0 - 10,5	18	22	10
A1160.20.145	M20x1,5	11,0 - 14,5	24	23	10
A1160.25.190	M25x1,5	16,0 - 19,0	30	28	10
A1160.32.255	M32x1,5	21,0 - 25,5	36	28	13
A1160.40.330	M40x1,5	28,5 - 33,0	46	34	13
A1160.50.420	M50x1,5	37,0 - 42,0	55	34	14
A1160.63.520	M63x1,5	46,0 - 52,0	70	37	14
A1160.75.630	M75x1,5	56,0 - 63,0	80	38	15

Joint long en deux parties

Filetage de raccordement métrique long
(isolation traversante)



Langer, zweiteiliger Dichtungseinsatz

Langes Anschlussgewinde metrisch
(durchgehend isoliert)

Long, two-piece sealing insert

Long entry thread metric
(overall length insulated)

A1160.17	M16x1,5	6,0 - 10,5	18	22	10
A1160.20	M20x1,5	8,0 - 14,5	24	23	10
A1160.25	M25x1,5	12,5 - 19,0	30	28	11
A1160.32	M32x1,5	17,0 - 25,5	36	28	13
A1160.40	M40x1,5	24,0 - 33,0	46	31	13
A1160.50	M50x1,5	33,0 - 42,0	55	34	14
A1160.63	M63x1,5	40,0 - 52,0	70	37	14
A1160.75	M75x1,5	50,0 - 63,0	80	38	15



**Presse-étoupe laiton nickelé
filetage métrique long**

Progress MS

Matière : Laiton nickelé
Joint intérieur : TPE
Joint torique : NBR

Rés. à la traction : selon EN 50262
version A

**Kabelverschraubungen Messing
Gewinde metrisch lang**

Progress MS

Material: Messing vernickelt
Dichtung: TPE
O-Ring: NBR

Zugfestigkeit: Nach EN 50262
Ausführung A

**Cable glands nickel-plated brass
long metric thread**

Progress MS

Material: nickel-plated brass
Seal: TPE
O-ring: NBR

Strain relief: acc. to EN 50262
Version A

IP 68

+100°C
-40°C



Référence
article



Ø
mm

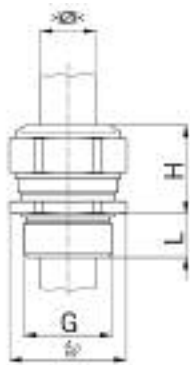


H
mm

L
mm

Joint court en une partie

Filetage de raccordement métrique long
(isolation non traversante)



Kurzer, einteiliger Dichtungseinsatz

Langes Anschlussgewinde metrisch
(nicht durchgehend isoliert)

Short, one-piece sealing insert

Long entry thread metric
(not overall length insulated)

A1100.06.025	M 6x1	2,0 - 2,5	8	12	8
A1100.06.030	M 6x1	2,5 - 3,0	8	12	8
A1100.06.035	M 6x1	3,0 - 3,5	8	12	8
A1100.08.035	M 8x1,25	2,5 - 3,5	11	14	10
A1100.08.050	M 8x1,25	3,5 - 5,0	11	14	10
A1100.10.040	M10x1,5	3,0 - 4,0	13	15	10
A1100.10.060	M10x1,5	4,0 - 6,0	13	15	10
A1100.12.050	M12x1,5	3,5 - 5,0	15	17	10
A1100.12.065	M12x1,5	5,0 - 6,5	15	17	10
A1100.12.080	M12x1,5	6,5 - 8,0	15	17	10
A1100.17.045	M16x1,5	3,5 - 4,5	18	20	10
A1100.17.060	M16x1,5	4,5 - 6,0	18	20	10
A1100.17.080	M16x1,5	6,0 - 8,0	18	20	10
A1100.17.105	M16x1,5	8,0 - 10,5	18	22	10
A1100.20.080	M20x1,5	6,0 - 8,0	24	21	10
A1100.20.110	M20x1,5	8,0 - 11,0	24	21	10
A1100.20.150	M20x1,5	11,0 - 15,0	24	23	10
A1100.25.125	M25x1,5	9,5 - 12,5	30	25	11
A1100.25.160	M25x1,5	12,5 - 16,0	30	25	11
A1100.25.205	M25x1,5	16,0 - 20,5	30	28	11
A1100.32.170	M32x1,5	14,0 - 17,0	36	28	13
A1100.32.210	M32x1,5	17,0 - 21,0	36	28	13
A1100.32.255	M32x1,5	21,0 - 25,5	36	28	13
A1100.40.240	M40x1,5	20,0 - 24,0	46	31	13
A1100.40.285	M40x1,5	24,0 - 28,5	46	31	13
A1100.40.330	M40x1,5	28,5 - 33,0	46	31	13
A1100.50.330	M50x1,5	29,0 - 33,0	55	34	14
A1100.50.370	M50x1,5	33,0 - 37,0	55	34	14
A1100.50.420	M50x1,5	37,0 - 42,0	55	34	14
A1100.63.400	M63x1,5	35,0 - 40,0	70	37	14
A1100.63.460	M63x1,5	40,0 - 46,0	70	37	14
A1100.63.520	M63x1,5	46,0 - 52,0	70	37	14
A1100.75.500	M75x1,5	45,0 - 50,0	80	38	15
A1100.75.560	M75x1,5	50,0 - 56,0	80	38	15
A1100.75.630	M75x1,5	56,0 - 63,0	80	38	15

Joint court en deux parties

Filetage de raccordement métrique long
(isolation non traversante)

Kurzer, zweiteiliger Dichtungseinsatz

Langes Anschlussgewinde metrisch
(nicht durchgehend isoliert)

Short, two-piece sealing insert

Long entry thread metric
(not overall length insulated)

A1100.17	M16x1,5	6,0 - 10,5	18	22	10
A1100.20	M20x1,5	8,0 - 15,0	24	23	10
A1100.25	M25x1,5	12,5 - 20,5	30	28	11
A1100.32	M32x1,5	17,0 - 25,5	36	28	13
A1100.40	M40x1,5	24,0 - 33,0	46	31	13
A1100.50	M50x1,5	33,0 - 42,0	55	34	14
A1100.63	M63x1,5	40,0 - 52,0	70	37	14
A1100.75	M75x1,5	50,0 - 63,0	80	38	15

